

Access: *Riverside*

A One-Stop Service Campus for City of Riverside Homeless Residents

The History

In June of 2003, the City of Riverside adopted the “Riverside Community Broad-Based Homeless Action Plan”. Since its adoption, the City has pro-actively pursued implementation of the 30 action-based strategies within the plan. A major accomplishment has been the creation of a centralized “campus” to provide an array of housing and supportive services to assist homeless individuals and families. Modeled after the PATH Mall concept, the campus will offer a coordinated system of services including outreach, crisis intervention, interim housing, rapid re-housing, homeless prevention resources, and coordinated case management. A central theme the Access Riverside initiative is the collaborative focus national best practice strategies, such as “Housing First” and other rapid re-housing approaches which focus on ending the cycle of homelessness.

The cul-de-sac at Hulen Place provides A ONE-STOP MULTI-SERVICE CAMPUS for homeless residents and those at-risk of becoming homeless in Riverside, where individuals and families can find access to the range of services and housing opportunities.

Building A - Riverside Access Center - Serves as the entry point and service hub of the City’s homeless continuum of care. At the Access Center can be found range of services under one-roof including street outreach, rental assistance, employment development, benefits enrollment, health care, mental health services, substance abuse recovery, veterans’ services, life skills training, education services, financial counseling, legal services, client stabilization resources, computer resources, and housing placement.

Building B - Pet Kennel - Provides a safe place for Emergency Shelter and Access Center guests to house their companion animals during their stay, allowing homeless people with pets to access services.

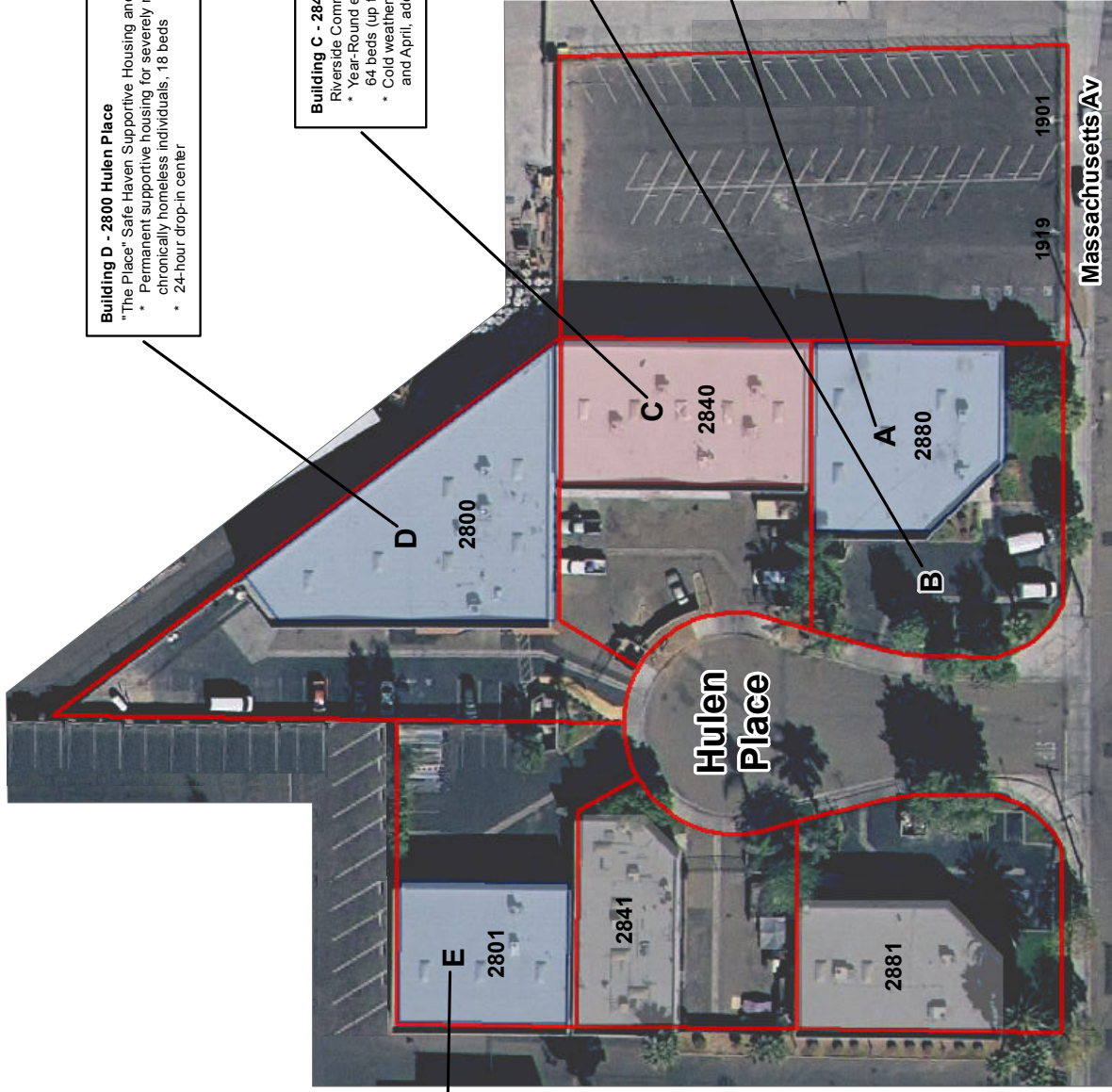
Building C - Riverside Community Shelter - A 64-bed facility, operated by Path of Life Ministries in partnership with the City and County of Riverside, provides a 30-day shelter program coupled with case management services for homeless men and women. In addition, between the cold weather months of December and April, an additional 72 beds are provided on a night-by-night basis. Approximately 1,600 individuals are served at the facility on an annual basis.

Building D - “The Place” Safe Haven Supportive Housing and Drop-in Center - Operated by Jefferson Transitional Programs in partnership with the County Department of Mental Health, provides 25 permanent supportive housing beds and a 24-hour drop-in center for chronically homeless individuals with severe mental illness.

Building E - SmartRiverside Digital Inclusion Program - Offers skills training and jobs for at-risk youth in computer technologies and provides basic computer skills training classes along with a free refurbished PCs for home use to low-income households in Riverside.



City of Riverside Homeless Service Campus



Building D - 2800 Hulen Place
 "The Place" Safe Haven Supportive Housing and Drop-in-Center
 * Permanent supportive housing for severely mentally ill chronically homeless individuals, 18 beds
 * 24-hour drop-in center

Building C - 2840 Hulen Place
 Riverside Community Shelter
 * Year-Round emergency shelter program, 64 beds (up to 30 days)
 * Cold weather shelter program between December and April, additional 72 beds (night-by-night basis)

Building B - Pet Kennel
 * For use by campus guests accessing services

Building A - 2880 Hulen Place
 Riverside Access Center
 * One-stop service center for homeless or those at risk of homelessness

Building E - 2801 Hulen Place
 SmartRiverside Digital Inclusion Program
 * Skills training and jobs for at-risk youth in computer technologies
 * Basic computer skills training along with a free refurbished PC for home use to low-income households in Riverside
 * E-Waste collection station

Legend

- City Owned Building
- Public/Private Partnership
- Privately Owned Building
- Parcel Boundary

N
 DATE: April 2011

